

Free-Standing Professional Office | Great User-Investor Opportunity

803 ROPER CREEK DRIVE GREENVILLE, SC 29615



Property Type	Office
Status	For Sale, For Lease
Sale Price	\$695,000
Lease Rate	\$14.00/SF/Modified Gross inclusive of Taxes and Insurance
Square Feet	+/- 4944 Square Feet
Zoning	PD
County	Greenville
Tax Map	0543140100802

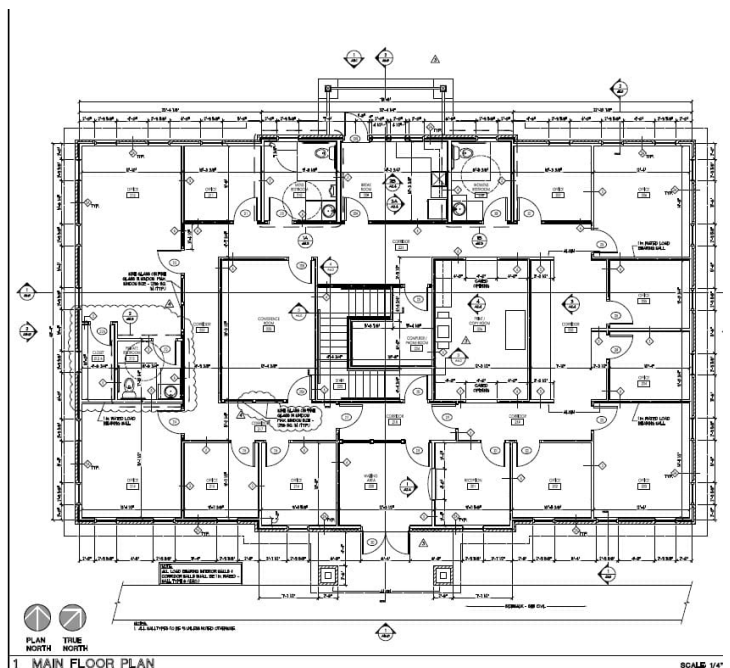
AGENT CONTACT



BRAD DOYLE
brad@kdsproperties.com
 O: 864-242-4200
 M: 864-237-8458

PROPERTY FEATURES

- High Quality, Professional Office Space in Roper Professional Park
- Easy Access to I-385 @ Roper Mountain Road and Pelham Road
- Well-Suited for Law, Engineering, or other Professional Office Users
- Eight (8) plus Private Offices, Work Room, Conference Room, Break Room, and Lobby with Receptionist's Office
- Greenville County Location - Just outside Greenville City Limits
- Also Available for Purchase - Additional 3,900 SF of Bon Secours Medical Investment Space

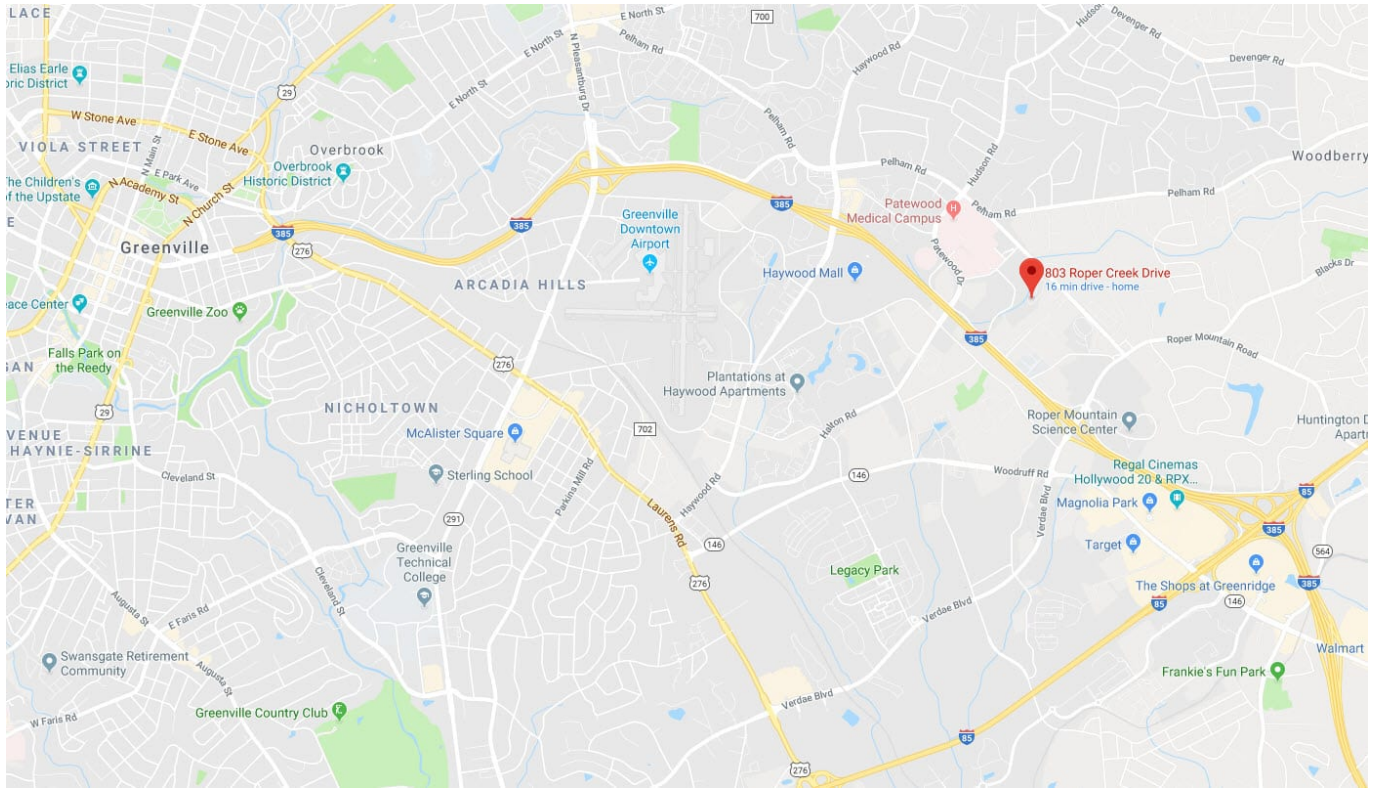


All information contained herein has been obtained from sources deemed reliable, but we cannot guarantee it. It is also subject to change without notice.

340 Rocky Slope Road, Suite 302, Greenville, SC 29607

864-242-4200 • kdsproperties.com • contact@kdsproperties.com

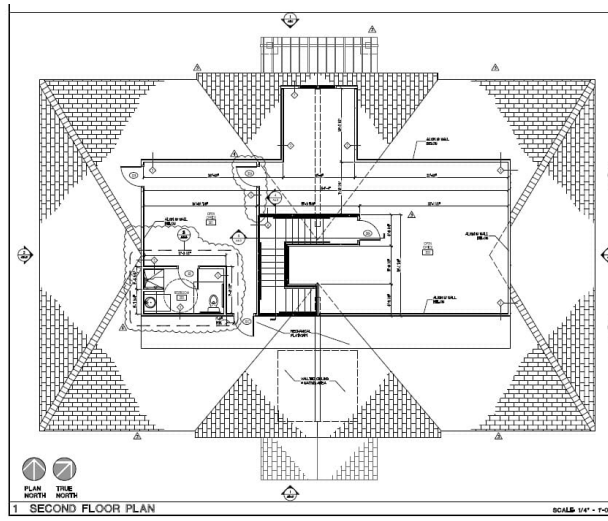
AERIAL VIEW



All information contained herein has been obtained from sources deemed reliable, but we cannot guarantee it. It is also subject to change without notice.

340 Rocky Slope Road, Suite 302, Greenville, SC 29607

864-242-4200 • kdsproperties.com • contact@kdsproperties.com



All information contained herein has been obtained from sources deemed reliable, but we cannot guarantee it. It is also subject to change without notice.

340 Rocky Slope Road, Suite 302, Greenville, SC 29607

☎ 864-242-4200 • kdsproperties.com • ✉ contact@kdsproperties.com